

An aerial photograph of a coastal landscape in Japan. The foreground and middle ground are dominated by terraced rice fields, which are lush green and arranged in a series of curved, stepped patterns down a steep hillside. The fields are separated by narrow earthen paths. In the background, the deep blue ocean stretches to the horizon under a clear sky. A small town or village is visible along the coast, with buildings and a road. The overall scene is a beautiful example of traditional agricultural terracing in a coastal environment.

Restoration and Recovery Efforts of 'Noto's Satoyama and Satoumi' GIAHS Site

August 8, 2024

Yoichi Iwaike

**Satoyama Promotion Office, Agriculture, Forestry and Fisheries Department,
Ishikawa Prefecture**

Sayako Koyama

**United Nations University Institute for the Advanced Study of Sustainability
Operating Unit Ishikawa/Kanazawa (UNU-IAS OUIK)**

United Nations University Institute for the Advanced Study of Sustainability Operating Unit Ishikawa/Kanazawa(UNU-IAS OUIK)

Ishikawa Prefecture

Promoting the development of thriving Satoyama and Satoumi

Common idea

Development of thriving Satoyama & Satoumi

Maintaining local communities and biodiversity by creating new values in Satoyama and Satoumi

GIAHS

Maintaining/passing on agriculture, forestry & fisheries-based regional community life, culture & landscapes and conserving biodiversity.



June, 2011

Noto's Satoyama and Satoumi was recognized as GIAHS

Traditional agricultural, forestry & fishing methods

Drying rice on a rack



Amafem ale diver



Rice terraces



Bamboo fence



Spectacular Satoyama landscape



White-walled black-tiled houses



Noto-Kirishima azalea

Cultural/religious festivals deeply connected to agriculture

Kiriko festival



Aenokoto

Wajima lacquerware



Agehama (up-shore) salt making



Abare festival



Cormorant festival

Traditional techniques

Charcoal making



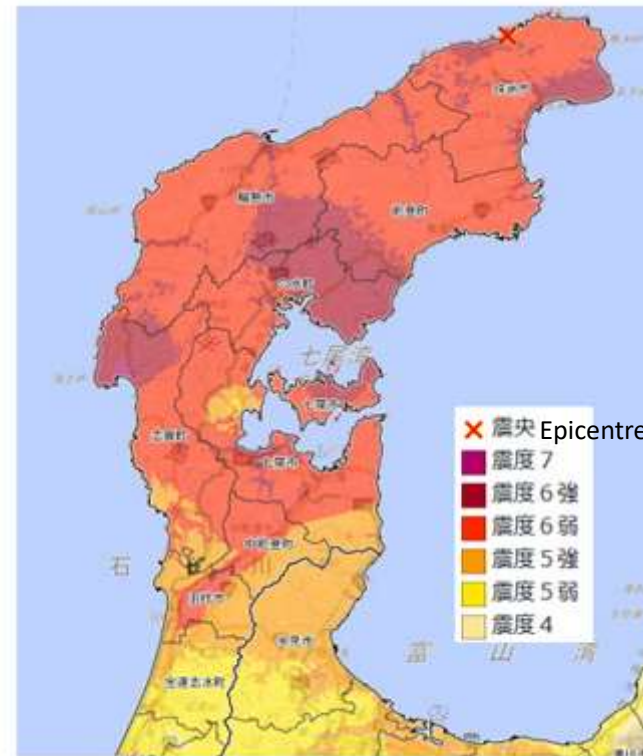
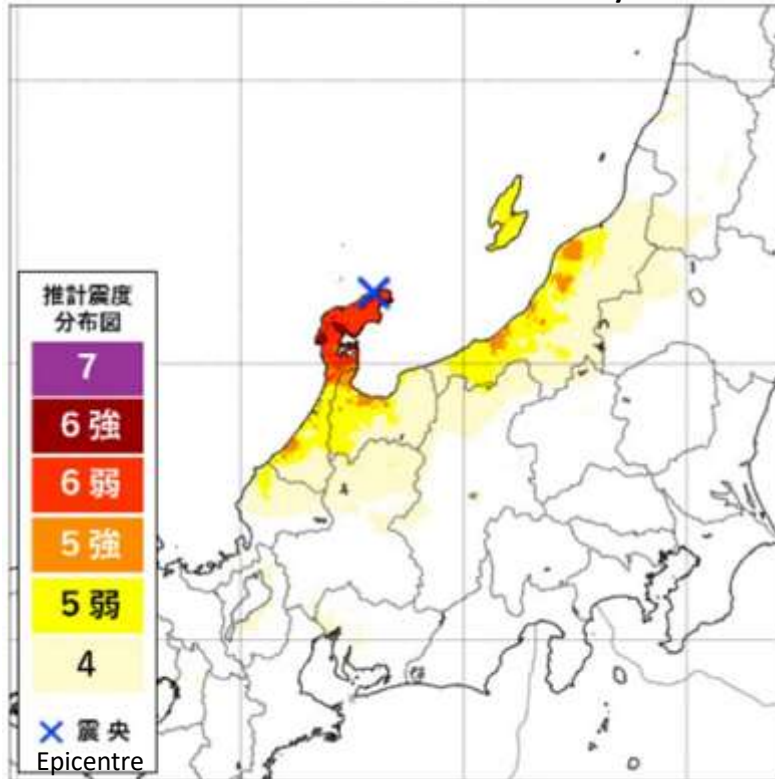
Notojofu (hemp fabric)



Overview of 2024 Noto Peninsula earthquake

When: 16:10 PM on Jan. 1, 2024
 Epicentre: Noto region, Ishikawa Pref. (Depth of epicentre –16 km)
 Magnitude: Magnitude 7.6 (Max)
 Direct deaths: 229 people (related death 70 people as of July 19, 2024)

Estimated seismic intensity distribution in Japanese earthquake scale*



* Japanese earthquake scale
 Level 1: weak
 Level 7: devastation

Source: Japan Meteorological Agency



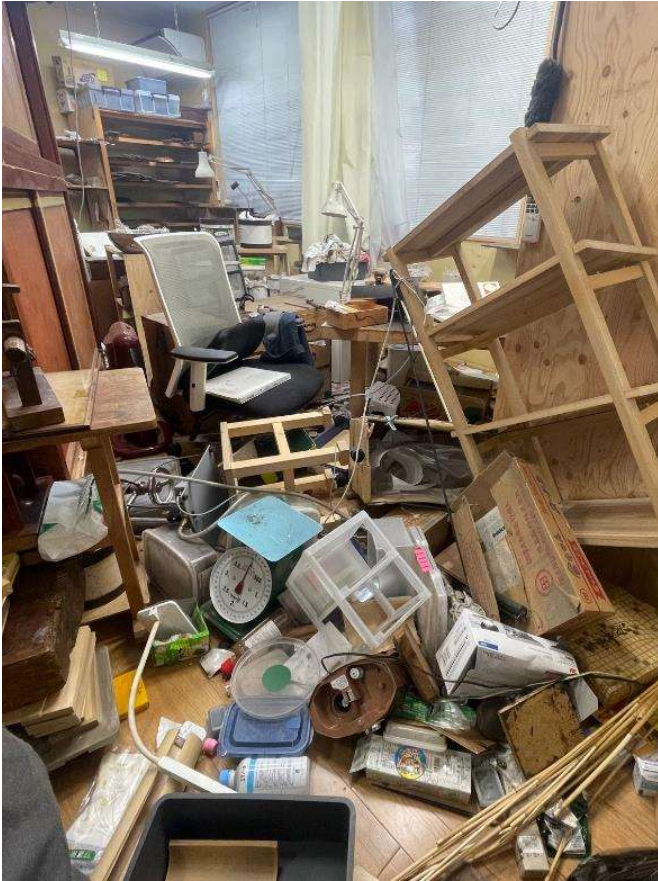
Coastal uplift



Cracks in rice fields & destruction of irrigation channels



Slope collapse



Lacquerware studio (WajimaKirimoto)



Cracks in salt farm



Wajima Morning Market



Slogan for creative recovery

Noto, the future of country

Four pillars of the policy

- 1 Building disaster resilient communities based on lessons learnt**
- 2 Rebuilding Noto's distinctive livelihoods**
- 3 Rebuilding communities and way of living**
- 4 Creating an environment and community where everyone can live and study safely and securely**

Ishikawa Creative Reconstruction Plan(GIAHSrelatedpart)



Restoration of ShiroyoneSenmaida Rice Paddies

ShiroyoneSenmaida as a symbol of recovery, restore farmland & irrigation channels using traditional methods, based on the will of the local community.

Strengthening attractiveness in relation to GIAHS and the release of crested ibis

Supporting the restoration, maintenance & succession of GIAHS components, promotion through events, and local initiatives linked to the release of crested ibis.

Supporting areas working to maintain & pass on GIAHS components

Revitalize local communities by providing support to areas working to restore, maintain & pass on GIAHS components, including rural landscapes.

Revival of Noto's 'festivals'

Revitalize local communities by providing support to restart festivals in Noto, which are one of Noto's attractiveness and a bond between people living in the area.

Expanding network of nonresident population related to Noto through recovery process

As the acceleration of population declineisexpected, measures to obtain support from nonresident population to overcome the disaster & maintain/improve the vitality will be considered.

Situation of Shiroyone Senmaida rice terraces



- Local government worked on the repairment of waterways & farm roads and local association worked on the repairment of cracks in rice paddies manually. 120 of 1,004 plots were planted in May.
- Restoration will continue and expected to complete by the end of March, 2025.



Photos taken on July 1, 2024

Support through Ishikawa Satoyama Promotion Fund



Ishikawa Satoyama Promotion Fund

A fund totaling 18 billion yen created by Ishikawa Pref. & 6 local financial institutions, the investment profits of which is used to support local residents & businesses in developing new products & services that utilize local satoyama and satoumi resources.

Support for rebuilding livelihoods

Targeting businesses that are affected by the earthquake, support is provide to the product development utilizing satoyama and satoumi resources, which are carried out in conjunction with post-disaster restoration.

Support to local communities

To boost local community regeneration, support is provided to community-wide efforts to maintain & restore satoyama and satoumi resources, including GIAHS components.

- Volunteers to help with simple restoration of farmland & farm work to restart Noto's core industry of agriculture, forestry and fisheries.



Tsunami litter removal
(Noto Town, April 2)



Mud lifting in waterways
(Wajima City, April 3)



Transporting seedlings
(Nanao City, April 4)



Seeding of oysters
(Nanao City, April 7)

Activities: 1,385 volunteers, 207 activity sites [as of end-July]

Support for Noto



能登のために、石川のために

応援消費 おねがい

プロジェクト
石川県

令和6年能登半島地震を受け、能登はもとより、金沢以南でも、飲食や観光、県産品の製造・販売を行う事業者の売上げが大幅に減少するなど深刻な影響を受けています。そのため、石川県では、共通のロゴを店舗や商品に貼っていただくことで、消費活動を通じて応援の機運を高める「能登のために、石川のために 応援消費おねがいプロジェクト」を、2月1日から開始しました。

**石川県への応援消費が
能登を支える力になります。**
このロゴマークを目印に
石川のものを買って、食べて、飲んで
応援の輪を広げましょう！

ロゴマークのデータは、石川県HPから無料でダウンロードいただけます。
能登を応援する気持ちがある方はどなたも無料でお使いいただけます。

Consumption support

ふるさと納税で 能登を応援

能登の恵み、揃っています！

「ふるさと納税」とは？
地域の特産品をお得に手に入れながら、減税への寄附をできる制度です。寄附額のうち、2,000円を超える部分については、所得税と住民税から金額が控除されます(一定の上限があります)。

手続きは難しい？
ワンストップ特例制度なら、一定の条件を満たせば簡単な手続きで行えます。
●ふるさと納税サイトから自治体・返礼品を選ぶ
●「寄附金振込控除に係る申告特例申請書」を寄附先の自治体に提出
●翌年度の個人住民税から控除(減額)される
詳しくはふるさと納税サイトにてご確認ください。

※QRコードを眺み込むと各市町のふるさと納税サイトへ飛びます。

Hometown tax donation program

令和6年能登半島地震に係る

ボランティア 参加のお願い

石川県では、震災の復旧作業等について、主に以下の2つの目的で支援いただけるボランティアを募集しています！

1 石川県災害ボランティア
被災地における
様々な復旧活動への支援

作業内容 災害ごみの片付け、運搬など

2 能登農林水産業ボランティア
能登の基幹産業である
農林水産業の再開を支援

作業内容 水路の泥上げ、草刈りなど

活動の流れ

**1 ボランティア
事前登録**

ボランティア活動への参加には事前登録が必要となります。

2 活動日予約

ボランティアセンターから活動日と活動内容に関する案内メールを受信してください。活動内容や参加人数を決定し、活動日と活動場所を決定してください。

**3 ボランティア活動
保険加入**

石川県災害ボランティア活動参加者は活動期間内は全てボランティア活動用として任意で活動参加者全員が活動用保険に加入する必要があります。

4 活動当日

事前に決定した集合場所にお集まりください。

* 参加、実施は天候次第となります(中止の場合は事前連絡)。ボランティアのみの参加は、活動当日の集合場所にて受付となります。* 活動期間中のみ活動用保険に加入する必要があります。* ボランティア活動用保険は、活動期間中にのみ有効です。* 活動期間中は、活動用保険の加入が義務付けられています。* 活動期間中は、活動用保険の加入が義務付けられています。* 活動期間中は、活動用保険の加入が義務付けられています。*

Volunteering

Thank you for your heart-warming nationwide support

Effort by UNU-IAS OUIK after the earthquake



Symposium on Supporting the Recovery of Noto Peninsula – Building Back Better

Date : May 11, 2024 Place : UNU Tokyo

Bringing together representatives from municipalities in Noto and Tohoku, and local stakeholders, discussed sustainable and resilient recovery from the Earthquake.



Research on the use of local water resources during water cut-offs after the earthquake

- Together with a researcher in Ishikawa Pref. Uni., carried out research on local water resources such as wells. (Notojima Island, Nanao City)



Noto Support Fair at the UNU Farmers' Market

- 'Noto Support Fair' is planned in collaboration with Ishikawa Pref. at the market being held in front of the UNU headquarter in Tokyo.



Thank you for your attention



Shiroyone Senmida (Azeno kirameki)

